

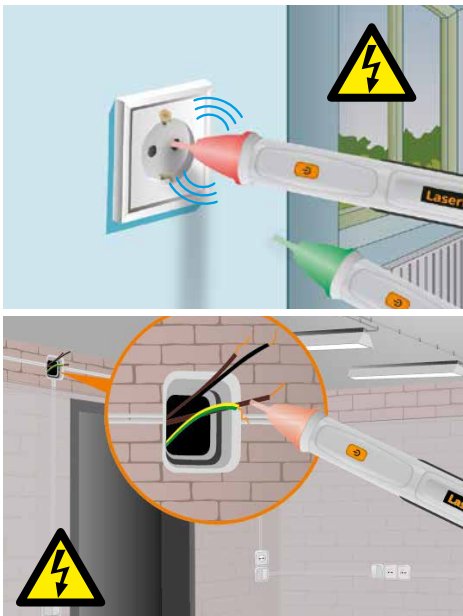
Laserliner

ActiveFinder One



Work safely on electrical lines –
in handy pen format

Rev18W41



- **Non-contact checking** of live AC voltage cables
- **Determines polarity of L/N conductors**, e.g. on sockets or terminals
- **Contactless detection** of live lines from 50 V AC to 1000 V AC
- **Locates electrical voltages** in cables, sockets, bulb sockets and fuses
- **Finds breaks** in wires and cables
- **CAT III - 1000 V** – can be used for measurements throughout building installations
- **Clearly visible LED multi-colour signalling** for indicating electrical voltages
- **Compact design** with convenient clip, practical for shirt pockets and tool boxes
- Additional **acoustic signalling**

TECHNICAL DATA	
INDICATOR	LED (red/green)
VOLTAGE RANGE	50 V AC ~ 1000 V AC Frequency 50 ... 60 Hz
OVERVOLTAGE CATEGORY	CAT III - 1000 V Pollution degree 2
POWER SUPPLY	2 x 1.5 AAA (NEDA 24A/IEC LR 03)
OPERATING CONDITIONS	0°C ... 50°C, Max. humidity 80% rH, no condensation, max. altitude 2000 m
STORAGE CONDITIONS	-10°C ... 60°C, Max. humidity 80% rH
DIMENSIONS (W x H x D)	19 x 139 x 25 mm
WEIGHT (incl. batteries)	48 g



LED multicolour indicators

With pocket clip

Simple handling



ActiveFinder One
+ batteries (2 x 1.5 AAA)
Packing dimension (W x H x D)
110 x 235 x xx mm

ARTICLE	ARTICLE NO	EAN-CODE	PU
ActiveFinder One	083.004A	4 021563 705061	5

